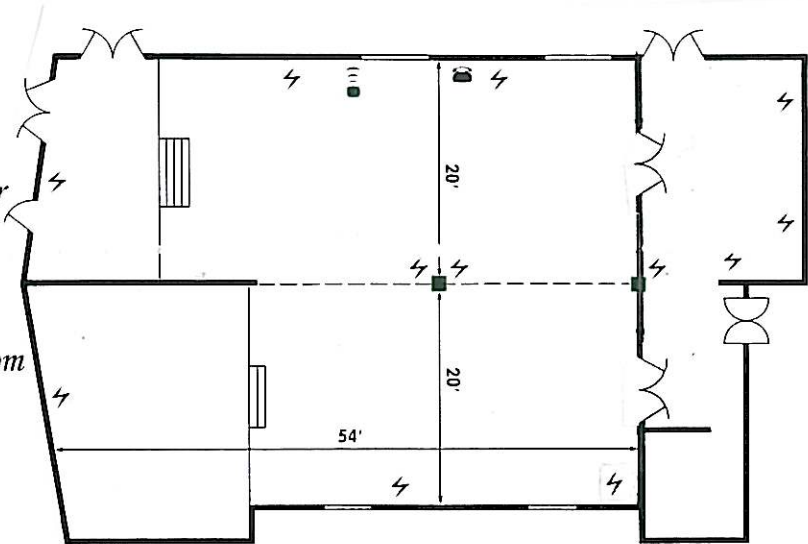


THE CROESO SUITE

- ▶ Located on the ground floor
- ▶ Folding screens can divide the suite into 2 sections
- ▶ Private bar in adjoining room
- ▶ Disabled access and toilet
- ▶ For up to 200 theatre style

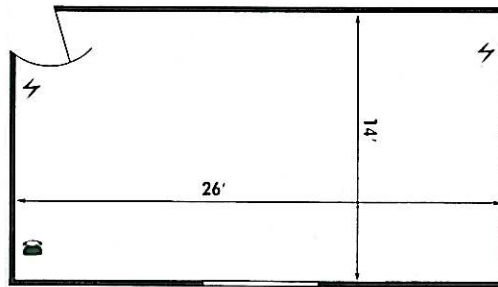


Dimensions: L: 55'0" (16.5m) W: 40'0" (12.2m) H: 9'6" (3.0m)

Layout options: T B U H C R BQ DD

DERWEN SUITE

- ▶ Situated on the ground floor
- ▶ Suitable for smaller conferences
- ▶ Access to garden & patio

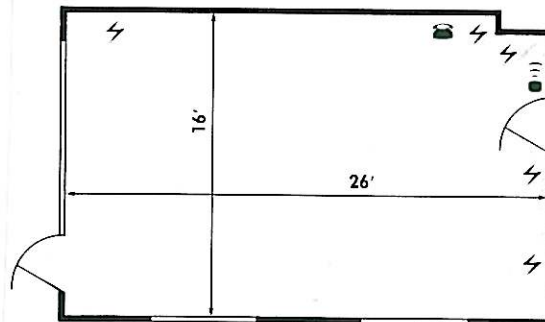


Dimensions: L: 26'0" (8.0m) W: 14'0" (4.2m) H: 9'0" (2.7m)

Layout options: T B U H C R BQ

GARDEN ROOM

- ▶ On the lower ground floor
- ▶ Purpose-built conference room
- ▶ For up to 30 boardroom style
- ▶ Access to garden



Dimensions: L: 26'0" (8.0m) W: 16'0" (4.8m) H: 8'0" (2.5m)

Layout options: B U H C

T

B

U

H

C

R

BQ

DD

Theatre style

Boardroom

'U'-shape

Hollow square

Classroom style

Reception

Banquet

Dinner Dance

Room	Theatre	Boardroom	'U'-shape	Hollow sq	Classroom	Reception	Banquet	D/Dance
Croeso	200	40	40	40	50	200	200	170
Derwen	30	25	20	20	20	30	25	•
Garden	•	30	24	24	15	•	•	•